

Gemeinde: Stadt Norderney
 Gemarkung: Norderney
 Flur: 18
 Maßstab: 1: 500

88/2

Birkenweg

ÜBERWEGUNGS-
RECHT

89/19

91/56

91/57

89/18

91/48

91/10

91/77

193 m²

SW-SCHACHT
DN 300

P

14

SD I

14A

182 m²

TE

TREPPEN

TE

15A

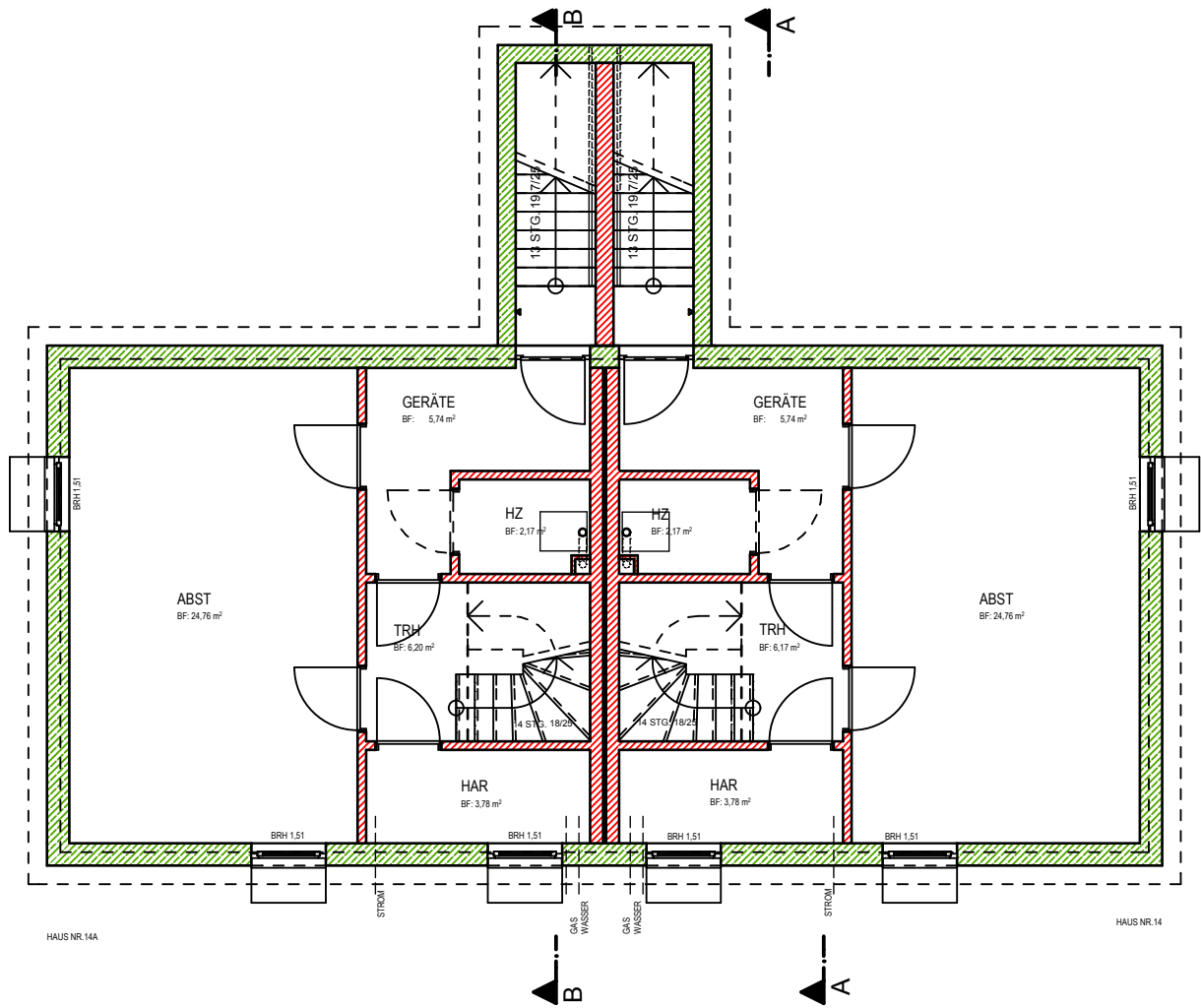
TREPPEN

TE

91/78

91/63

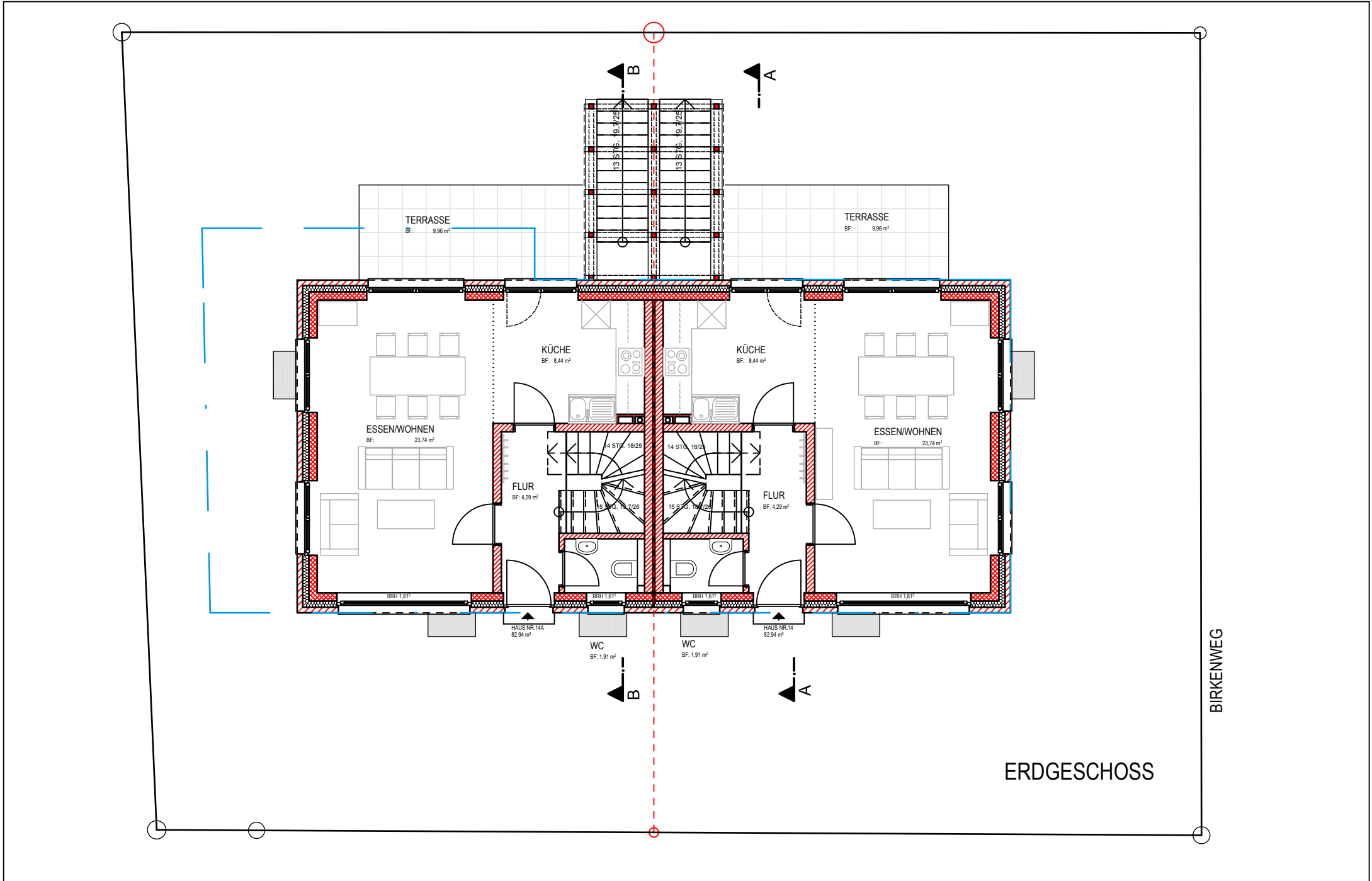
91/71



HAUS NR.14A

HAUS NR.14

KELLERGESCHOSS



TERRASSE
BF: 9,96 m²

TERRASSE
BF: 9,96 m²

KÜCHE
BF: 8,44 m²

KÜCHE
BF: 8,44 m²

ESSEN/WOHNEN
BF: 23,74 m²

ESSEN/WOHNEN
BF: 23,74 m²

FLUR
BF: 4,29 m²

FLUR
BF: 4,29 m²

14 STG. 18/25

14 STG. 18/25

15 STG. 18/25

15 STG. 18/25

HAUS NR.14A
82,94 m²

HAUS NR.14
82,94 m²

WC
BF: 1,91 m²

WC
BF: 1,91 m²

BRH 1,61*

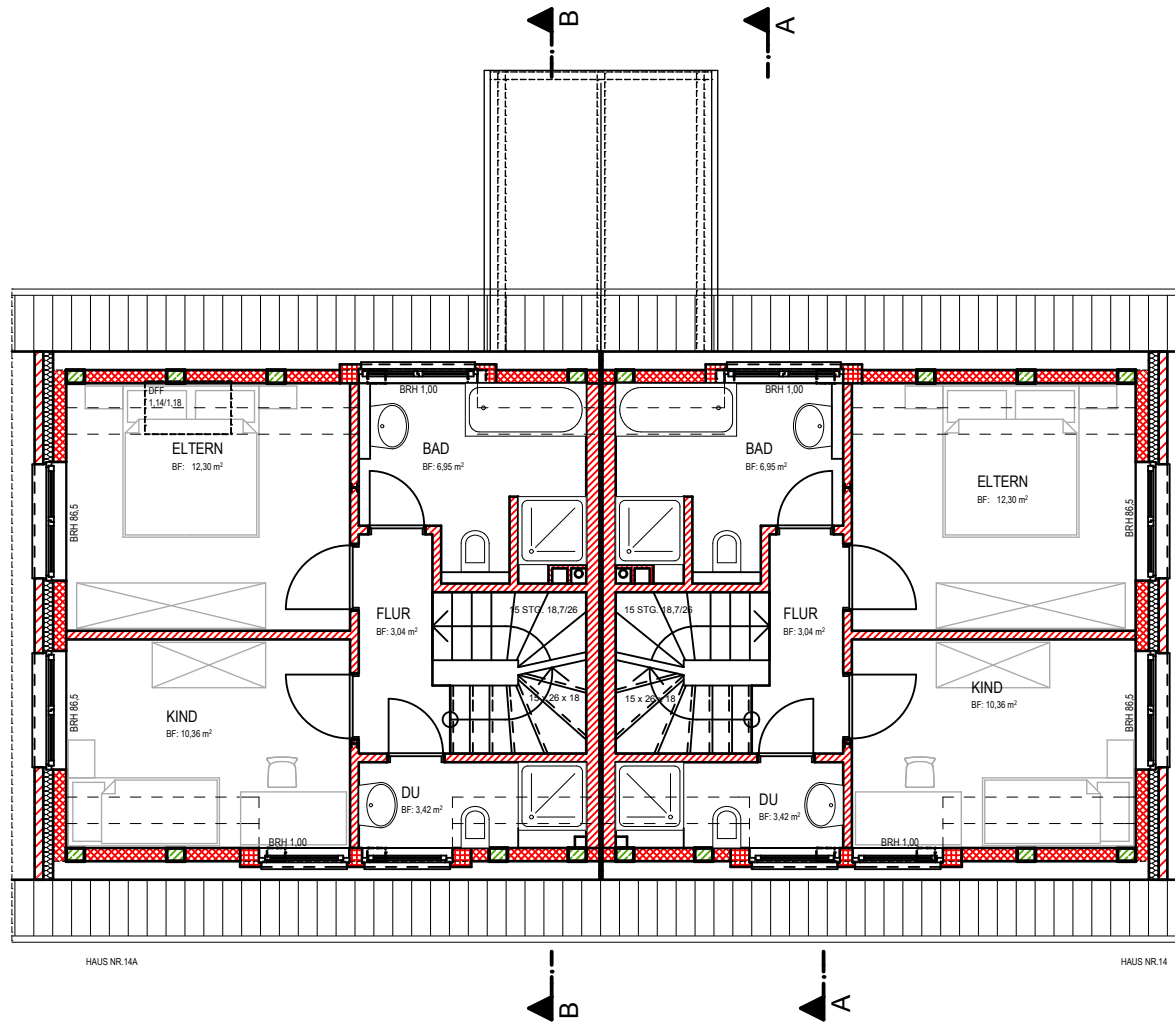
BRH 1,61*

BRH 1,61*

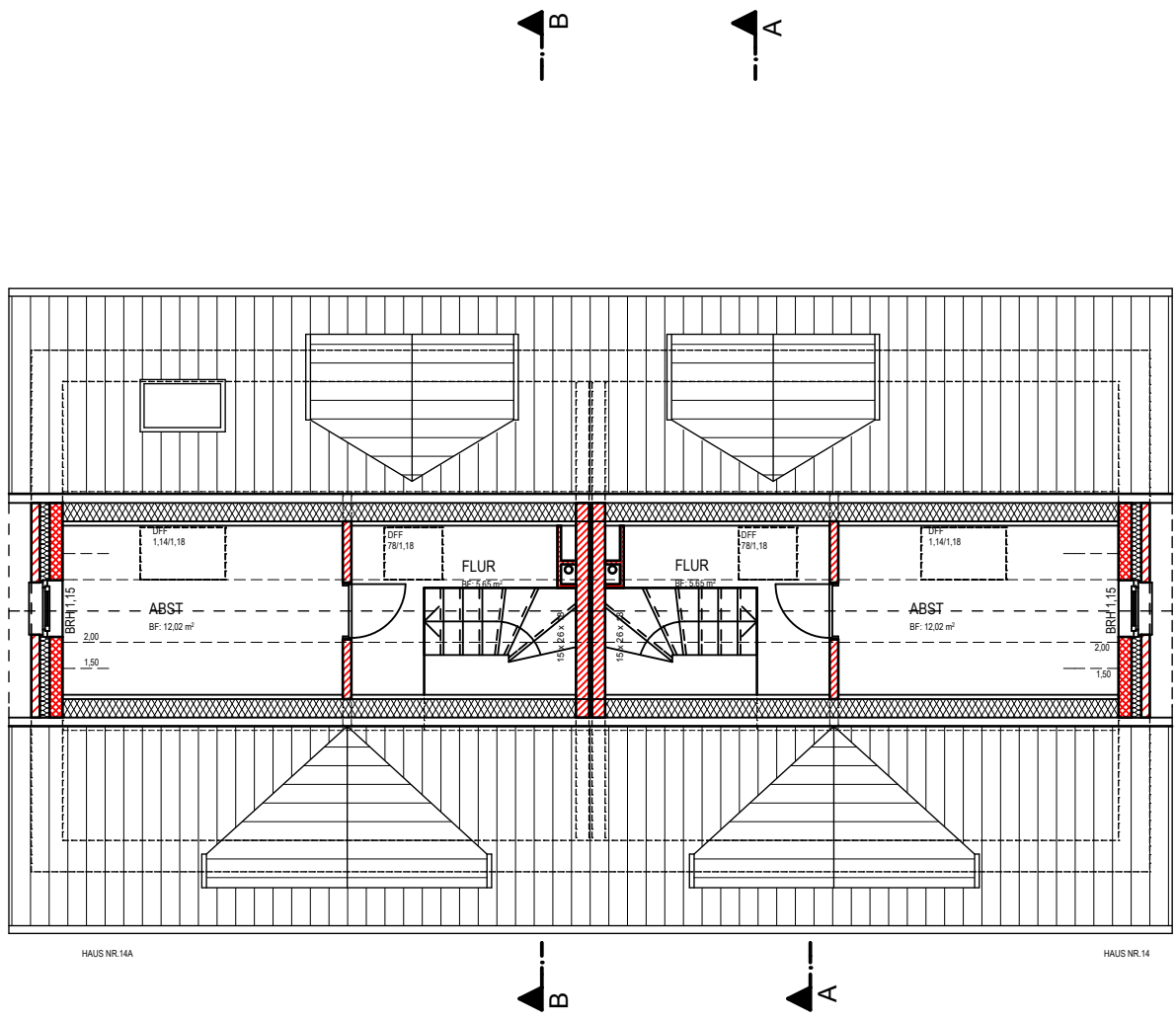
BRH 1,61*

ERDGESCHOSS

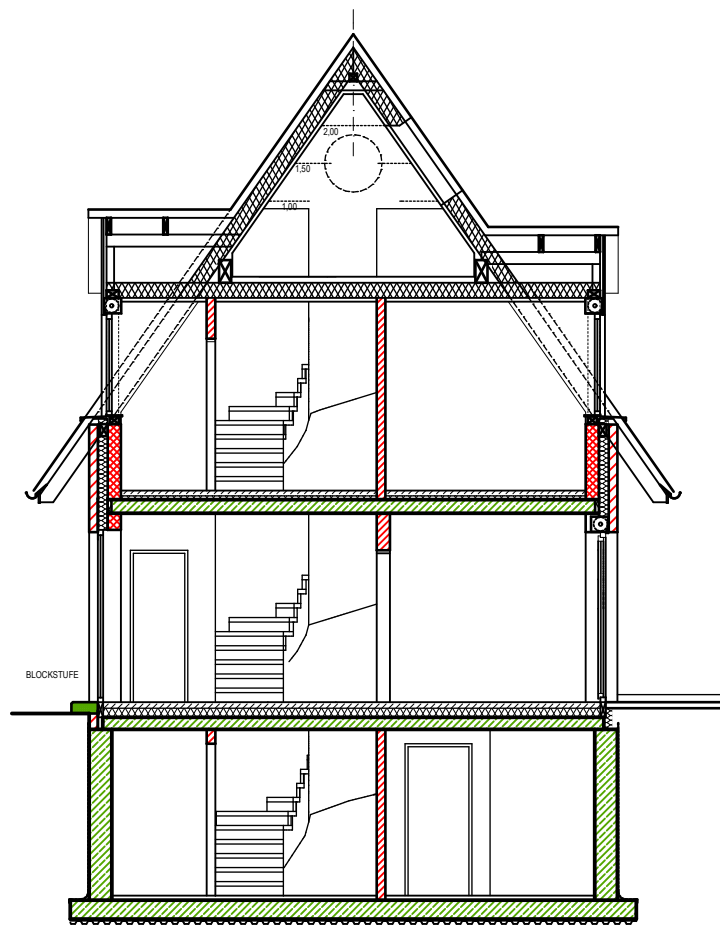
BIRKENWEG



DACHGESCHOSS



DACHBODEN



SCHNITT



HAUS NR. 14A

HAUS NR. 14

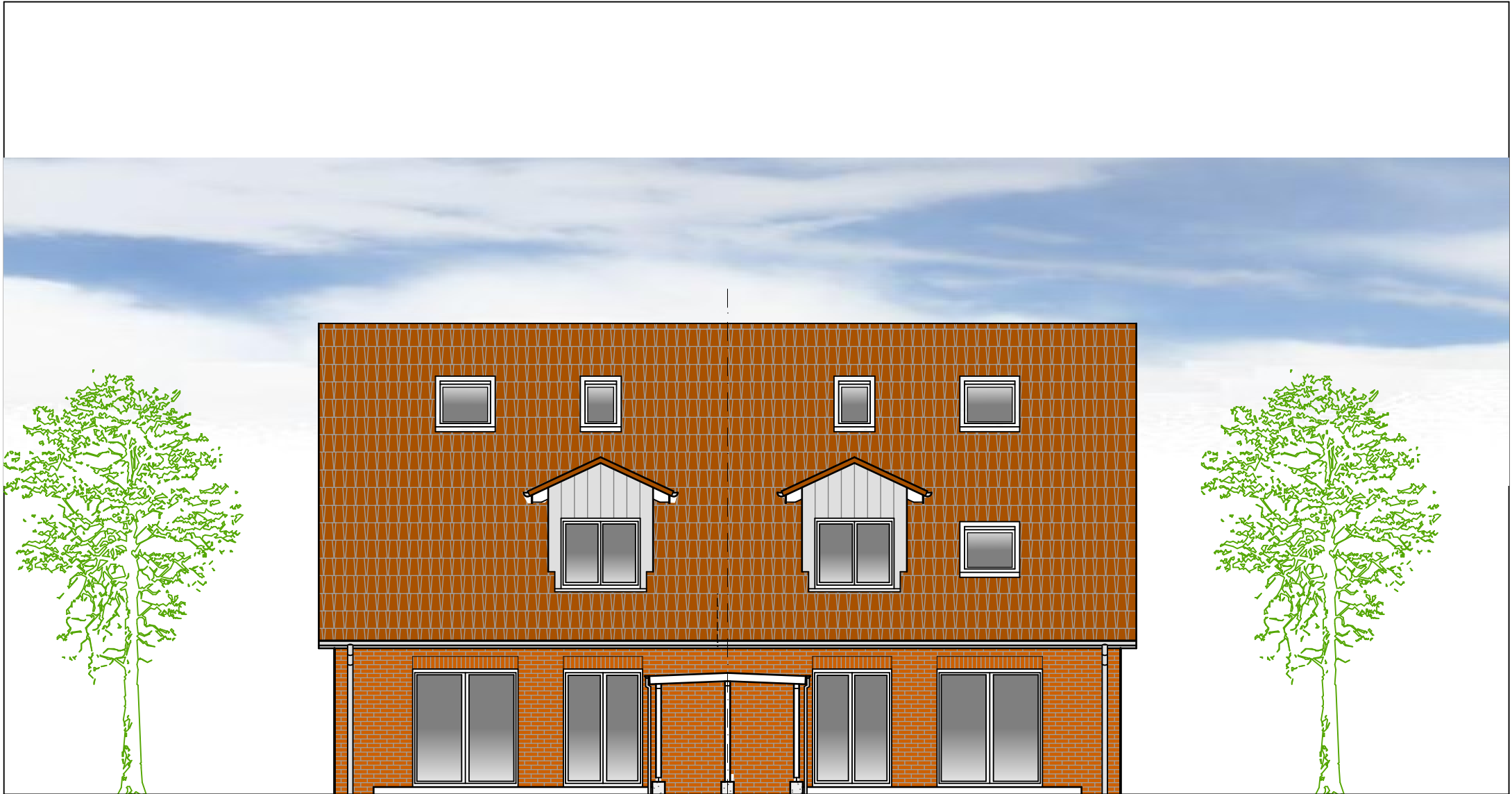
ANSICHT NORD



GRENZE

HAUS NR. 14A

ANSICHT OST



HAUS NR. 14

HAUS NR. 14A

ANSICHT SÜD



HAUS NR. 14

ANSICHT WEST

GRÄNZE